

# MANUAL V1.0

## SlacklineWebbing LSDTube

Please check regularly for updates of this manual on slacktivity.com

available length
30m 80m



### Specifications:

- » Width: 26mm
- » Weight: 54g/m
- » Material: 100% Polyamide (PA)
- » Webbing-Type: Tubular Webbing (T)
- » Stretch:

«MainLoop-2» MBS:18+kN

MBS: 25kN

«MainLoop-1» MBS:18+kN

«BackupLoop» MBS:12+kN

LABEL

MBS 25kN, sewn loop MBS 18+kN

## 1. Area of application

The area of application of the slackline-webbing "LSDTube Type A" embraces the use as a slackline. Both in parks and as highline. In highline use, the webbing can be used both as main line and backup line. The LSDTube Type A is equipped with two MainLoops and one BackupLoop. The webbing can be fixed with the MainLoop-1 without a further weblock. The webbing should be secured back with the BackupLoop. In slacklining and highlining there is a potential risk of accident, severe injury or death. Therefore this product must only be used by trained or otherwise competent persons or people that are under direct supervision and visual control of such a person.

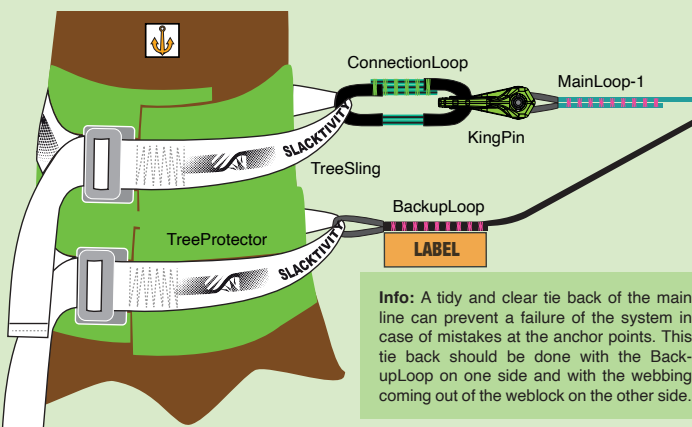
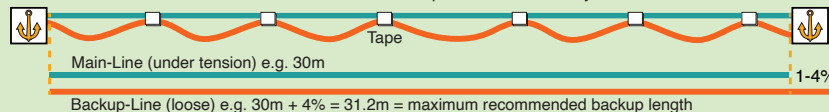
## 2. How to use

2.1 Attach the line with the MainLoop-1 and the BackupLoop at one anchor point.

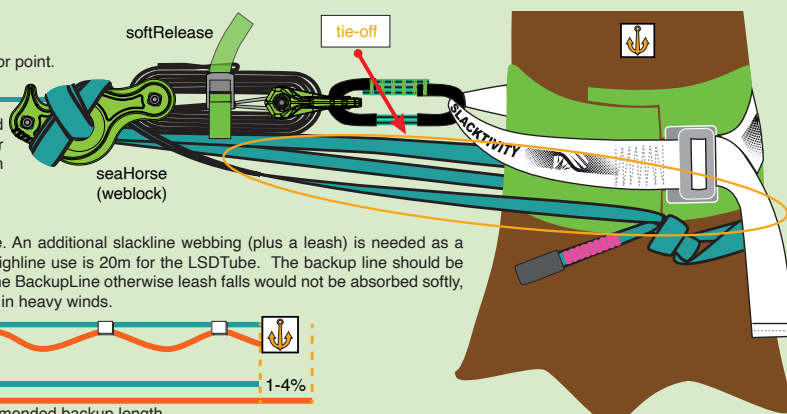
2.2 Insert the webbing into a weblock at the second anchor point and tension it with a HangOver-Pulley (or another tensioning system of your choice). Tie off the system with the webbing coming out of the weblock with the method described in the weblock-manual.

### Information for the setup of highlines

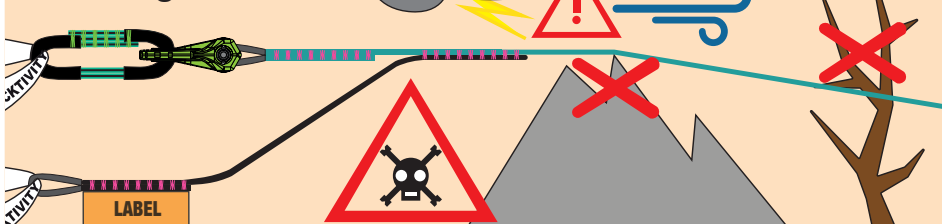
The figure above shows a possible setup of the LSDTube as a park line. An additional slackline webbing (plus a leash) is needed as a backup-line for a highline setup. The recommended minimum length in highline use is 20m for the LSDTube. The backup line should be 1 - 4% longer as the tensioned main line. It is recommended **not** to tight the BackupLine otherwise leash falls would not be absorbed softly, cut resistance decreases and because the line could build up momentum in heavy winds.



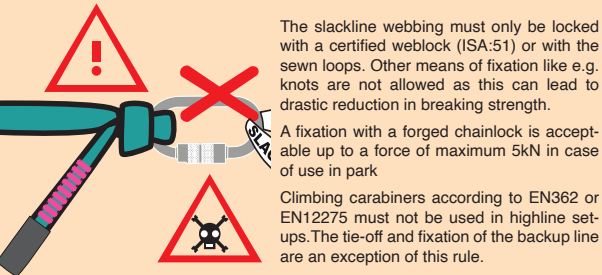
**Info:** A tidy and clear tie back of the main line can prevent a failure of the system in case of mistakes at the anchor points. This tie back should be done with the BackupLoop on one side and with the webbing coming out of the weblock on the other side.



## 3. Warnings



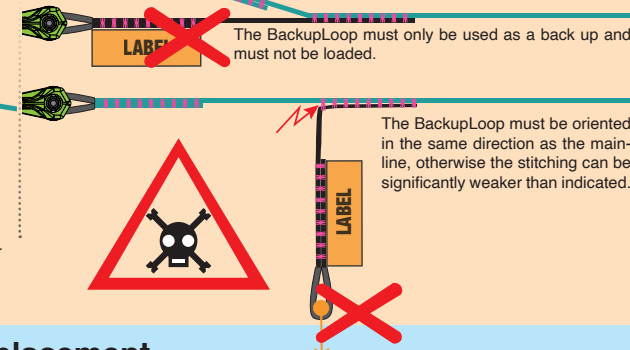
The slackline webbing must be installed hanging freely. No support. Make sure to leave enough space to branches and other obstacles so that no contact is possible even when the line is being moved heavily to different sides. It is recommended to de-rig the line in case of an upcoming thunder storm or when heavy winds are announced.



The slackline webbing must only be locked with a certified weblock (ISA:51) or with the sewn loops. Other means of fixation like e.g. knots are not allowed as this can lead to drastic reduction in breaking strength.

A fixation with a forged chainlock is acceptable up to a force of maximum 5kN in case of use in park

Climbing carabiners according to EN362 or EN12275 must not be used in highline set-ups. The tie-off and fixation of the backup line are an exception of this rule.



The BackupLoop must only be used as a back up and must not be loaded.

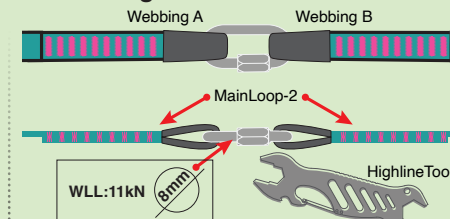
The BackupLoop must be oriented in the same direction as the main-line, otherwise the stitching can be significantly weaker than indicated.

## 4. Life span and replacement

Under optimal storage conditions and with appropriate use without obvious wear and tear there is a life time limitation of 720 days of use. It is recommended to keep records of the days of use to make sure to replace the webbing in time. In general, the service life of the product is reduced when used in extreme conditions, in environments with UV-light, salt, sand, dirt, mold, snow, ice, moisture or in chemicals. In some circumstances, the LSDTube can sustain damage to such a degree that its service life is reduced to a single use. Before each use check the condition of the LSDTube in degradation, wear and rigidification. Especially in case of severe wear the product should not be used anymore. This is the case when the webbing shows cuts, visual/perceptible imperfections, burns or severe friction damage

**Transportation and storing:** The product must be transported separated from sharp objects and stored dry and protected from light, separated from acids, bases and solvents. After contact with salty water or sand, it is recommended to wash the webbing by hand with clean water.

## Connecting slacklines



Two webbings (A+B) can be connected with a 8-10mm oval quicklink connecting the two end loops (MainLoop-2). The quicklink must be screwed tight with the HighlineTool (or a similar tool) in a way that it cannot be opened by hand anymore. For optimal performance we recommend the 8mm INOX quicklink of Maillon Rapide.

## Additional Information

Developed and designed by SLACKTIVITY Switzerland  
Made in Taiwan

Please report incidents and accidents with Slacklines on this URL: [sair.slacklineinternational.org](http://sair.slacklineinternational.org)

## Contact

SLACKTIVITY.CH Ltd.  
Dörfli 2, 8765 Engi, Switzerland  
Phone: +41 77 408 03 57  
Email: [info@slacktivity.ch](mailto:info@slacktivity.ch)  
URL: [www.slacktivity.com](http://www.slacktivity.com)